



Foundations of the “big society”

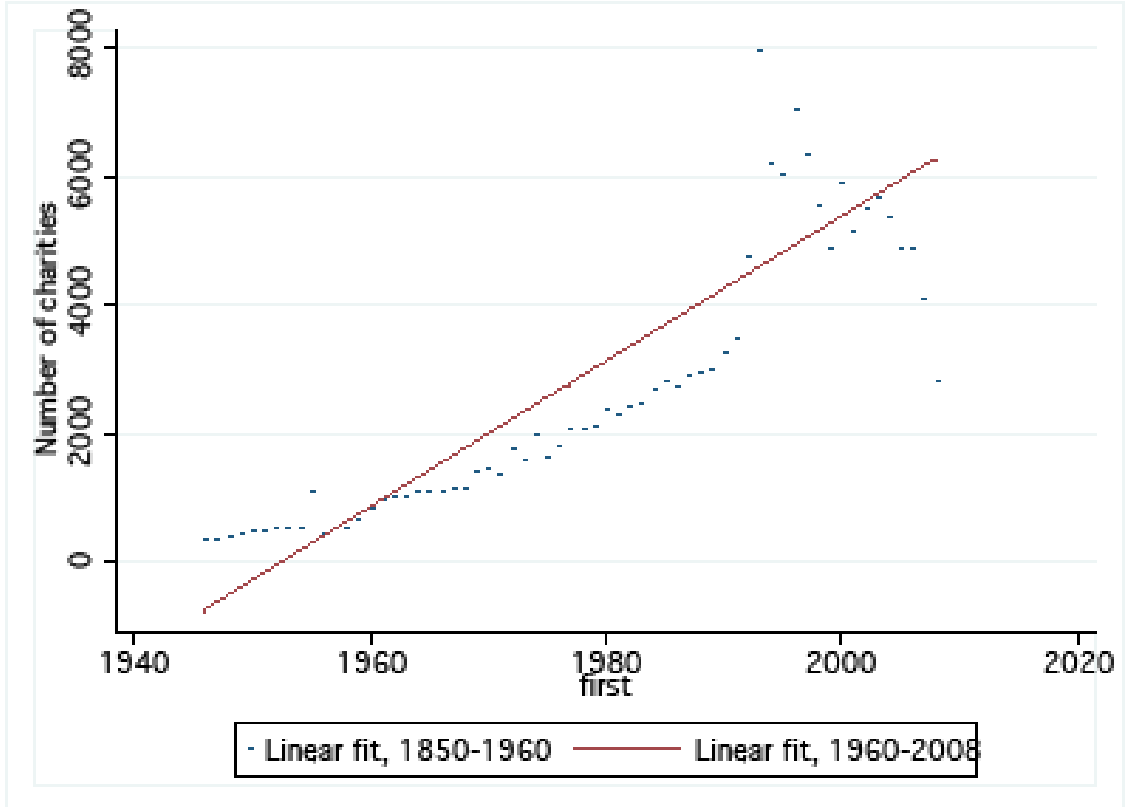
John Mohan

TSRC (www.tsrc.ac.uk) / CGAP

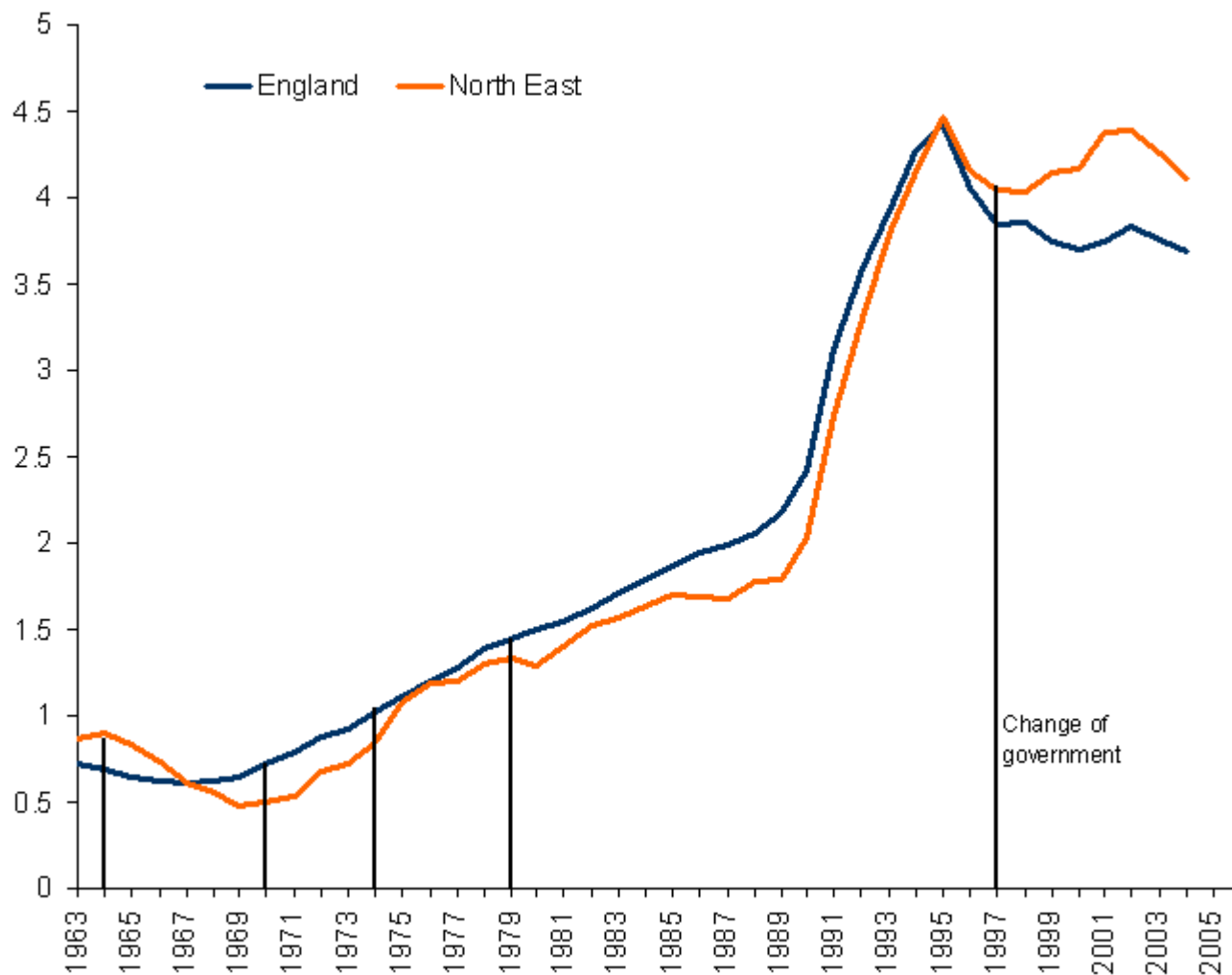
(www.cgap.org.uk)

jfm1@soton.ac.uk

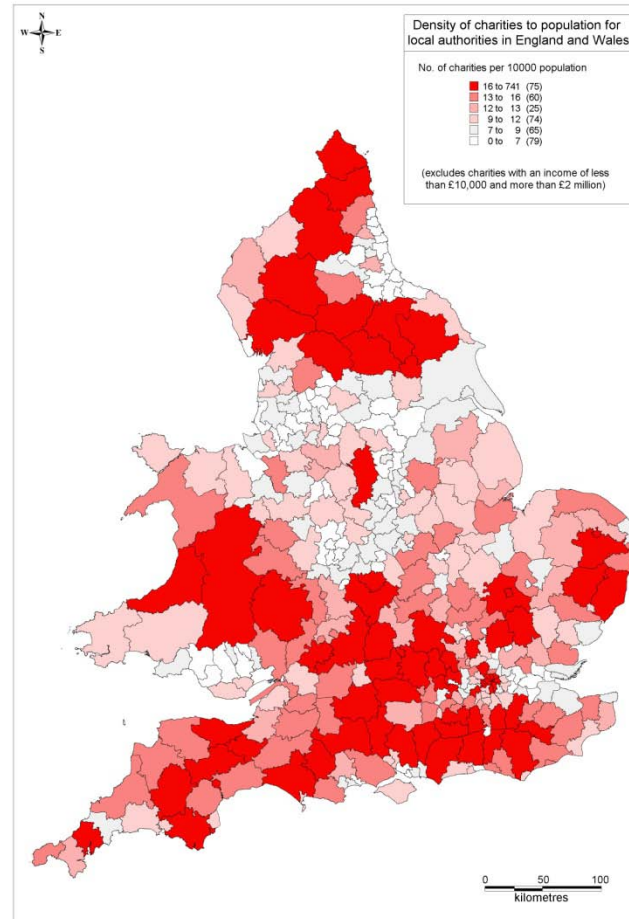
Charity foundation dates, 1945-

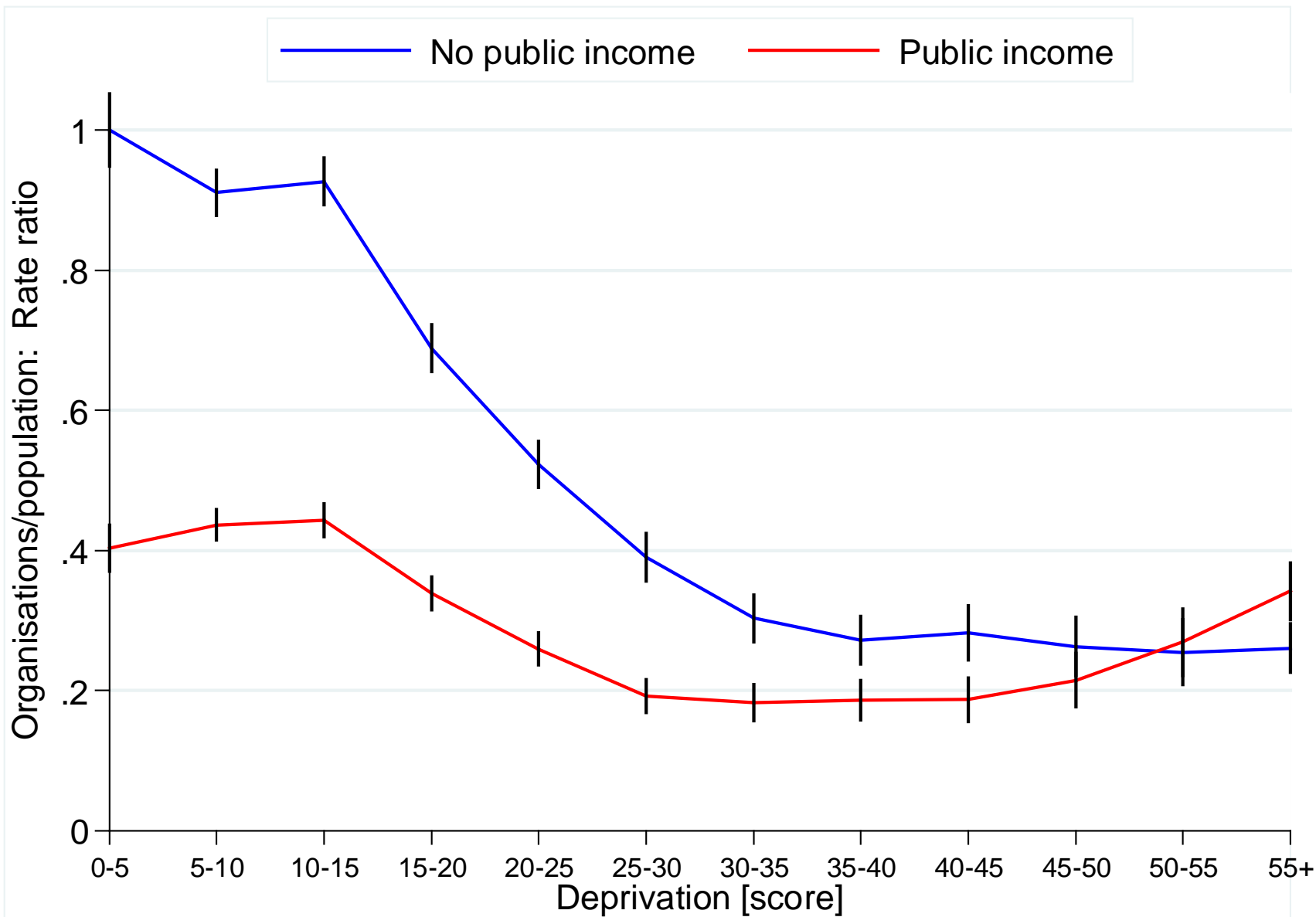


Charity foundations 1963-2006: percentage of charities founded, by year, England and NE compared



Charity deserts?

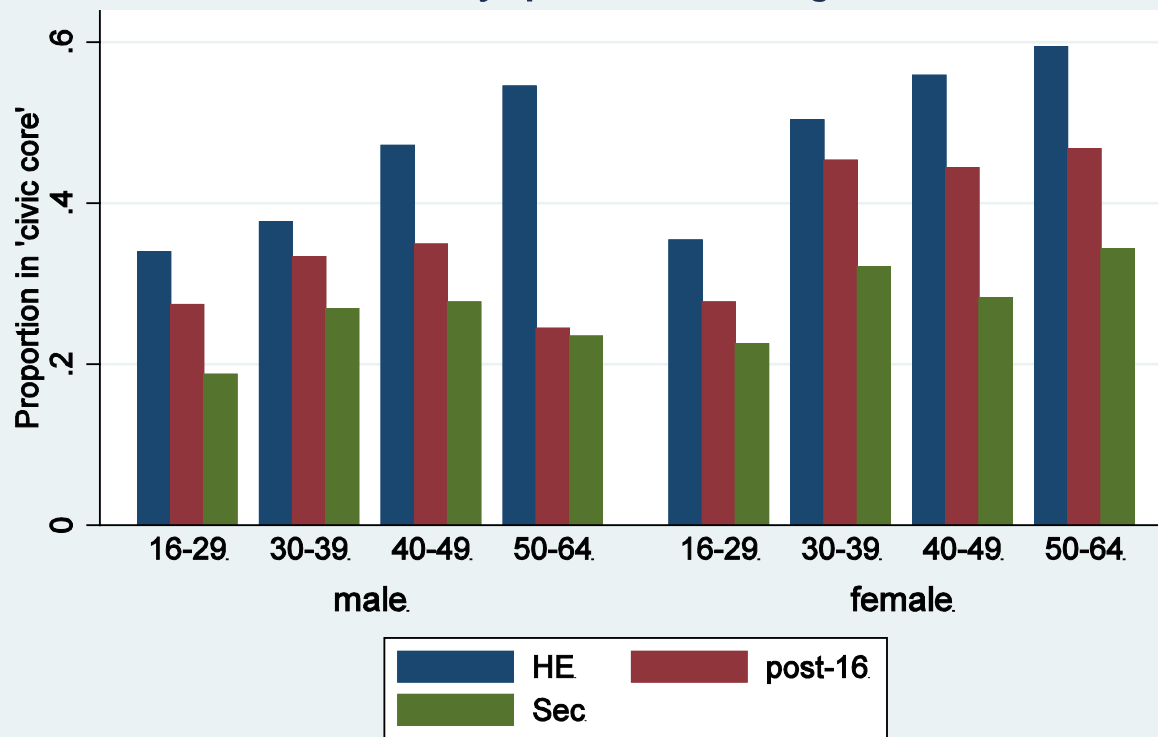




Civic core

- the subset of people who collectively provide over 2/3 of at least ONE of the following:
 - Unpaid help
 - Donations to charity
 - Participation in a range of civic organisations(after Reed and Selbee, 2001)

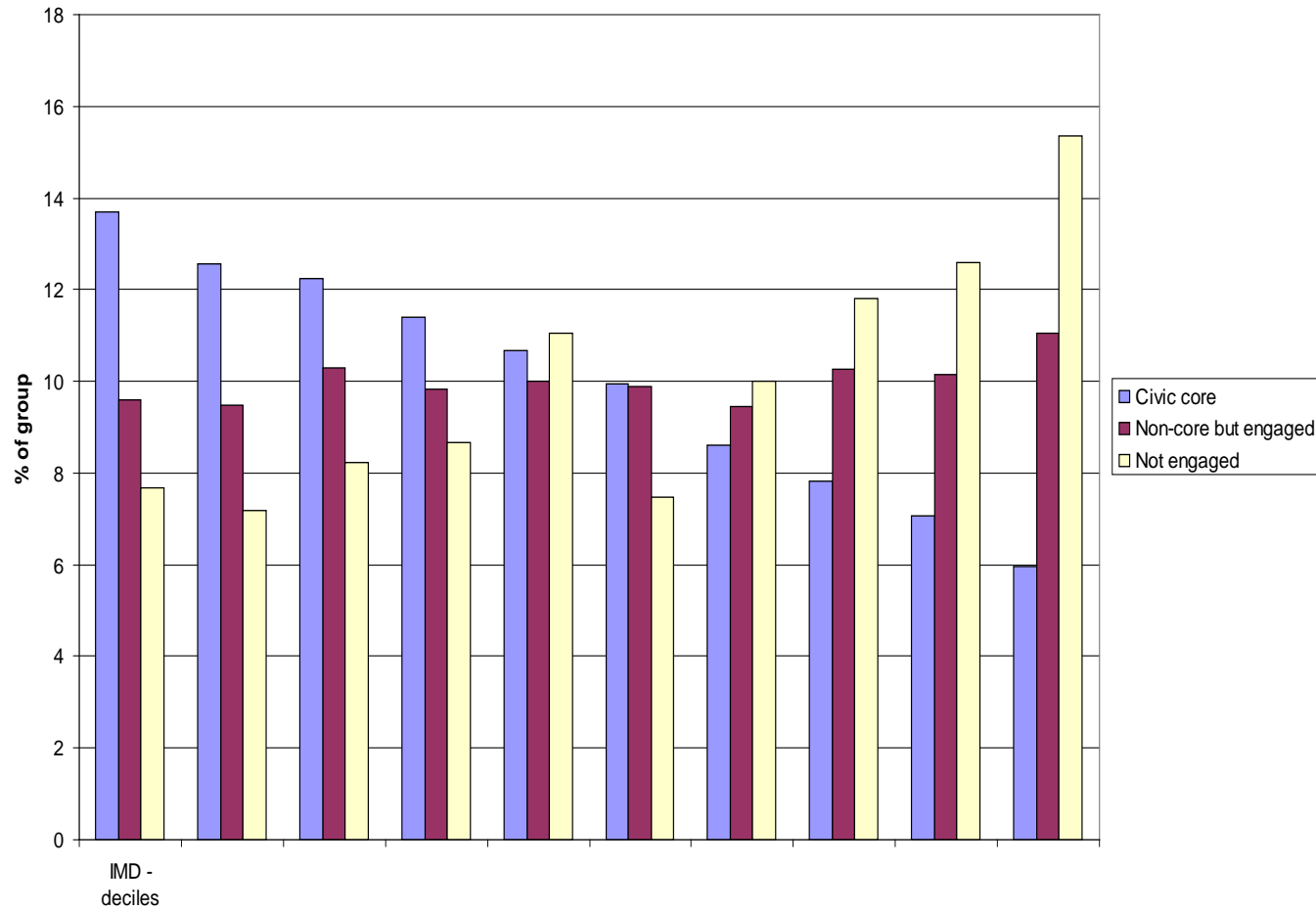
Civic core by qualifications, age and sex



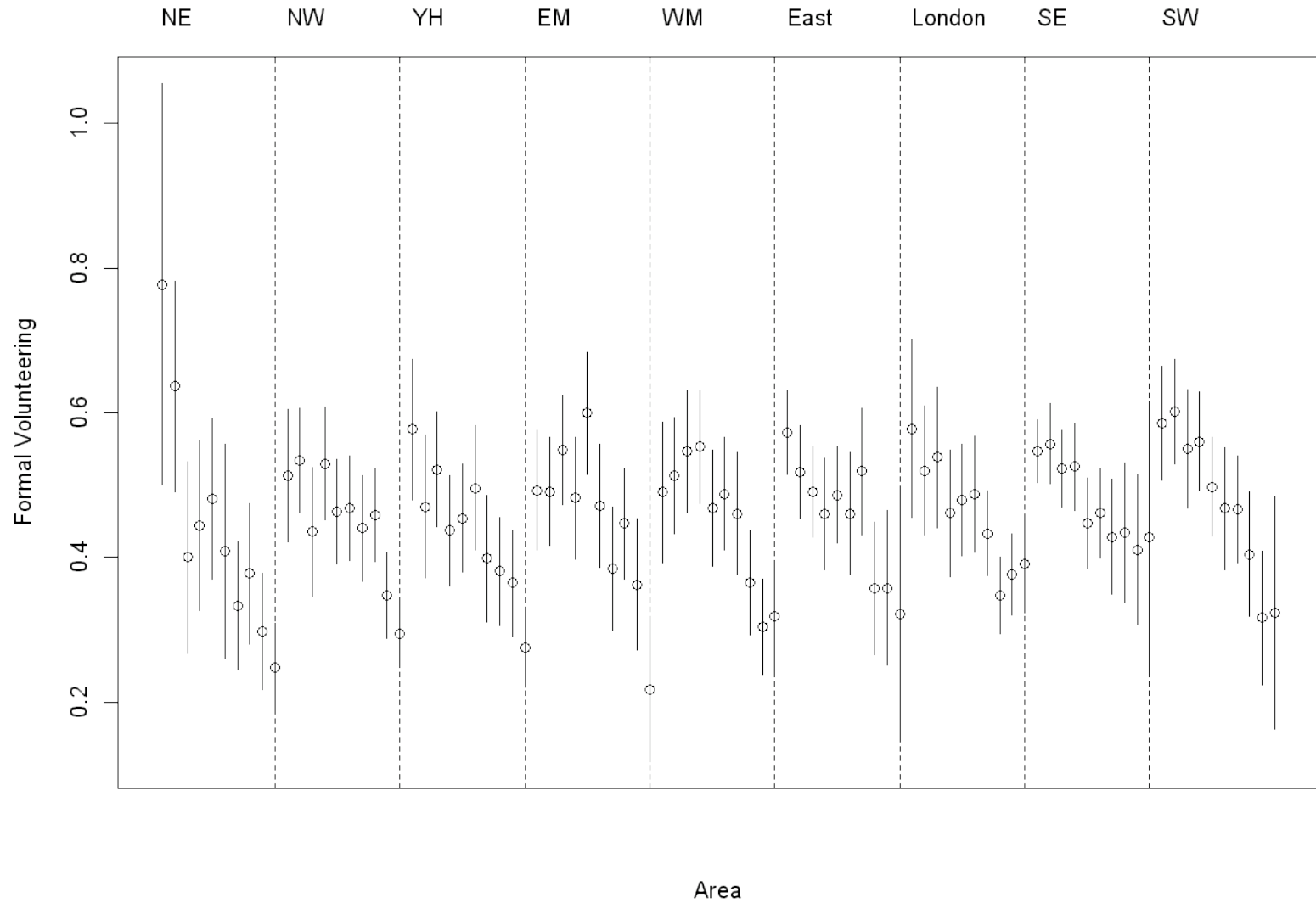
Source: Citizenship Survey 2007-9.

Distribution of core and non-core groups by IMD

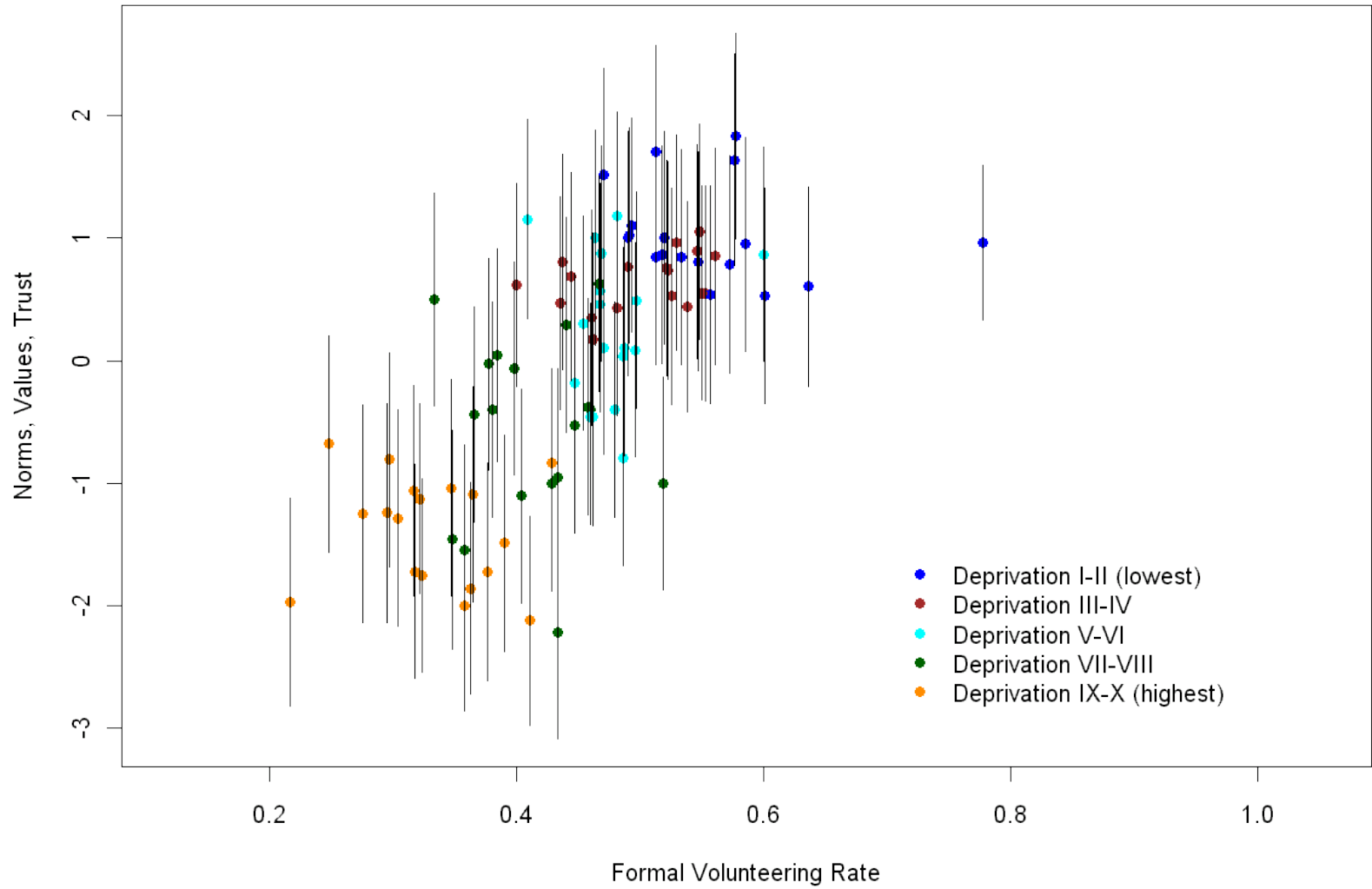
Distribution of core and non-core groups by IMD

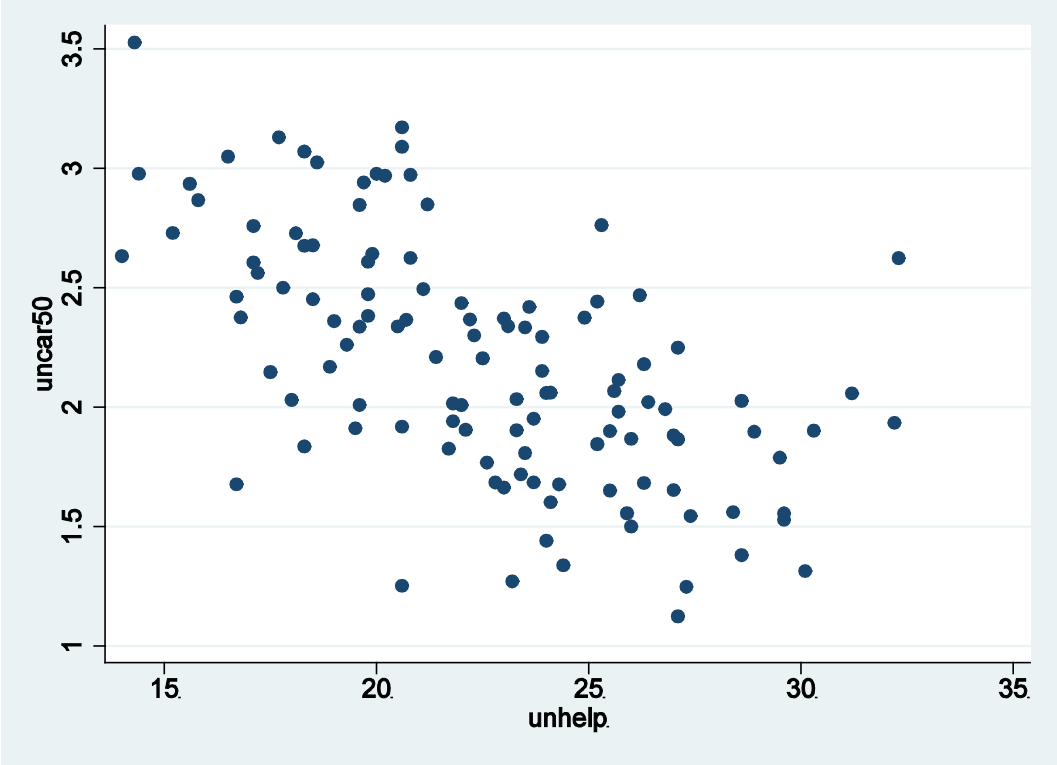


Area variation in volunteering rates: ranked by levels of deprivation

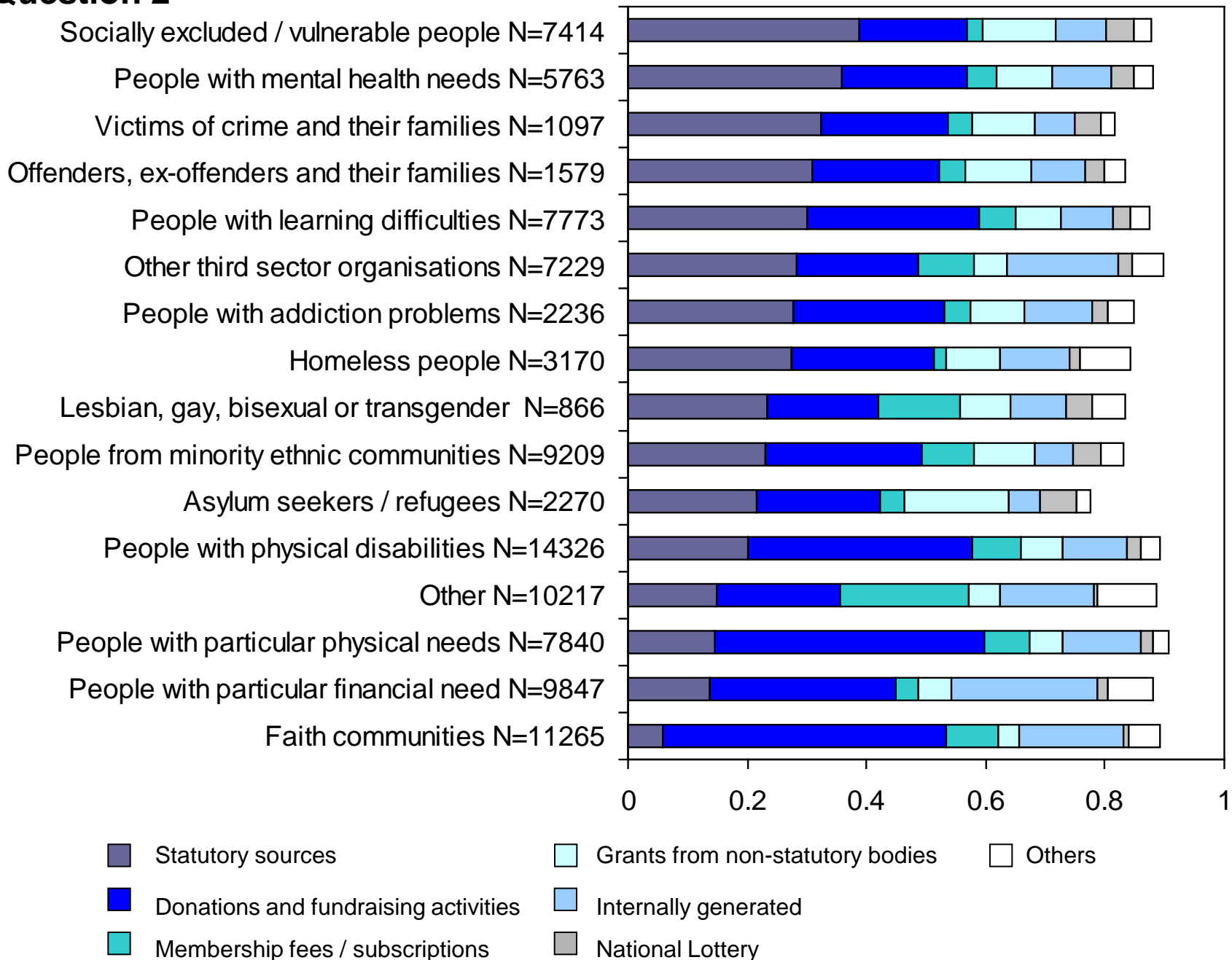


Volunteering rates and social capital by level of deprivation





Question 2



Proportion of TSOs receiving public funding

